

FHD Extension News

Council Grove Office: 620-767-5136
Cottonwood Falls Office: 620-273-6491
Website: www.flinthills.k-state.edu/4-h
Facebook: flinthillsdistrictksre

Shandi's E-mail: sdandres@ksu.edu
Chelsea's E-mail: chelse1@ksu.edu
Abby's E-mail: agettinger@ksu.edu
Betty Ann's E-mail: byeager@ksu.edu
Aleece's E-mail: adpriest4@ksu.edu

GET TO KNOW OUR TEAM



Hi everyone, I hope your summer is going well! My name is Chelsea Bartels. I have been an Agriculture & Natural Resource Agent and 4-H Agent with the Flint Hills District for about 9 months. My primary office is in Cottonwood Falls and I do work out of the Council Grove office as well.

I live east of Cottonwood Falls with my husband Brian and our son Wade. We enjoy taking care of our animals on our farm which include cattle, horses, chickens, dogs and cats for now! We stay busy working on our property, riding horses, camping and fishing, and staying busy with Wade and all of his adventures.

I grew up outside Cottonwood Falls and graduated from Chase County High School and was also a 12 year member of the Gladstone 4-H Club. I attended Pratt Community College on a Rodeo Scholarship and earned my Associates Degree in Animal Science. I went on to attend Kansas State University and earn my Bachelors Degree in Animal Science with an emphasis in Production Management. Go Cats! I previously worked for the Farm Service Agency right out of college for 5 years and then stayed at home with my son for 3 years before taking the position with Extension.

I have enjoyed getting to meet the communities of Chase and Morris Counties from an Extension Agent point of view. Services that we offer through our office are soil test, forage test, private applicator license testing, water sample kits and educational information for all your ag related questions, just to name a few. This time of year, with the 4-H program our offices are gearing up for the County Fairs. Both counties each have a county fair and have great 4-H programs to be involved in. Please reach out to our offices if you know someone who would like to join 4-H, the new season begins October 1st.

If you have any agriculture questions about horticulture, livestock, natural resources or crops please reach out to the Extension Office and we would be happy to help! I look forward to meeting and working with more of you in the future.

Inside this issue:

Get to Know our Team	1
Chase County Fair Schedule	2
Morris County Fair Schedule	3-4
4-H News	5
FCS News	6-7
Ag News Livestock Pests	8-9
Ag News Upcoming Events Community Info	10-15

101st

SCHEDULE OF EVENTS

CHASE COUNTY FAIR

July 23-28
2022

Swope Park
Cottonwood Falls, Ks
USA

Chase County Fair Association
PO Box 100 • 205 Broadway
Cottonwood Falls, KS 66845
620-273-6491

PRE-FAIR

THURSDAY, JULY 21

4-H Clothing & Fashion Revue Judging 4:30 pm

SATURDAY, JULY 23

Clean Up & Set Up of Fair Buildings & Grounds 6:30 am
Breakfast provided by Toledo 4-H Club

Fair Kick Off Celebration

Food Trucks Open 6:30 pm

Schmitz Blitz Band 7:30 - 9:30 pm

Band sponsored by Kaltenbacher Charitable Fund

FAIR WEEK BEGINS

SUNDAY, JULY 24

4-H & Open Horse Show 5:00 pm

MONDAY, JULY 25

4-H Dog Show 8:30 am

Food Sale begins 1:00 pm

Dairy Show 4:00 pm

Hot Dog Feed Sponsored by Diamond 4-H Club 6:30 pm

Youth Dance for 2021-22 6th-12th Grade 8:00 - 10pm

Sponsored by Gladstone Leadership Members

TUESDAY, JULY 26

4-H & Open Swine, Sheep & Goat Show 8:30 am

Children's Hands-on Workshop 1:00 pm

Ice Cream Social 6:30 pm

4-H & Youth Carnival 6:30 pm

WEDNESDAY, JULY 27

4-H & Open Class Beef 8:30 am

4-H & Open Class Rabbit & Poultry Shows 8:30 am

4-H Showmanship Finals 2:00 pm

Fun Night, Races, Pet Parade (see inside back cover) 6:00 pm

Free Watermelon Courtesy of Chase Co. Farm Bureau 6:00 pm

4-H Olympics 7:30 pm

THURSDAY, JULY 28

Livestock Judging Contest 8:30 am

Exhibits Released 11:00 am

Stanley Stout Memorial 4-H Livestock Auction 4:30 pm

Ice Cream Social...Hosted by Citizens State Bank..... Following Livestock Auction

BBQ 5:30 pm

4-H Gift Basket winners announced & Awards 6:30 pm

Public 4-H Fashion Revue 7:00 pm

FRIDAY, JULY 29

After Fair Clean Up 6:30 am

Breakfast provided by Bazaar 4-H Club



Follow us on Facebook on the Chase County Fair page for updates.

2022 Morris County Fair Schedule

Updated as of 6/1/22

SATURDAY- July 23rd

9:00 a.m. – Dog Show

8:30 a.m to 12:30 p.m. – Snack Shack Open (serving limited menu)

SUNDAY – July 24th

6:30 p.m. – Superintendent’s Meeting at Fair Building

MONDAY – July 25th

5:00 p.m. – Set up for Clothing Judging and Fashion Revue at the Fair Building

TUESDAY – July 26th

1:00 p.m. – Clothing Construction and Fashion Revue Judging

1:00 p.m. – Dining With Your Project Judging

7:00 p.m. – Fashion Revue and Talent Showcase, Fair Building

WEDNESDAY – July 27th

8:30 a.m. to 10:30 a.m. – Snack Shack Open (serving drinks & snacks)

9:00 a.m. –Cat Show and Hand Pet Show

6:00 p.m. – Fair Cleanup and Setup (Building and Livestock Areas)

6:00 p.m. to 8:00 p.m. – Snack Shack Open (serving drinks & snacks)

THURSDAY – July 28th

8:00 a.m. to 2:00 p.m. – Snack Shack Open (serving limited menu)

9:00 a.m. – 4-H and Open Horse Show

FRIDAY – July 29th

5:00 p.m. to 8:00 p.m. – Check-in: 4-H Exhibits (**ALL non-perishable & ALL livestock entries**)

Check-in for any Open Class Exhibit

5:00 p.m. to 9:00 p.m. – Snack Shack Open (serving drinks & snacks)

(8:00-9:00 will be through side window only)

SATURDAY – July 30th

7:30 a.m. to 9:30 a.m. –Check-in 4-H Entries (**ONLY food, horticulture, floriculture items will be accepted**)

Check-in for any Open Class Exhibit

8:00 a.m. to 9:00 p.m. – Snack Shack Open (serving full menu; 8:00-9:00 p.m. will be a limited menu)

9:00 a.m. – Swine Show (Showmanship followed by Pee-Wee Showmanship)

10:30 a.m. – Judging of 4-H and Open Class Foods Exhibits

11:30 a.m. – Judging of 4-H and Open Class Floriculture, Horticulture, and Field Crop Exhibits

12:00 p.m. – Judging of 4-H Fiber Arts Exhibits

12:00 p.m. – Judging of Banners, Duct Tape, and Home Environment Exhibits

1:00 p.m. – Judging of 4-H Visual Arts and Self-Determined

2:00 p.m. – Judging of Space Tech Exhibits and Miscellaneous Exhibits

2:00 p.m. – Judging of Notebooks and Club Record Books

2:30 p.m. – Judging of Open Class Family and Consumer Sciences Exhibits

3:00 p.m. – Dairy Cattle Show followed by Dairy Goat Show

5:00 p.m. – 4-H Food Auction

6:00 p.m. – Bucket Calf Show followed by Costume Class

6:30 p.m. – Beef Show



2022 Morris County Fair Schedule

Updated as of 6/1/22

SUNDAY – July 31st

9:00 a.m. to 9:00 p.m. – Snack Shack Open (serving full menu; 8:00-9:00 p.m. will be a limited menu)

9:30 a.m. – Youth Led Church Service

10:00 a.m. – 12:00 p.m. – Family and Consumer Science (FCS) Judging Contest

12:00 p.m. – Judging of Photography

12:00 p.m.- 2:00 p.m. – Photography Judging Contest

1:00 p.m. – Judging of Shooting Sports, Wildlife, Woodworking, Energy Management, Entomology, Forestry, & Geology Exhibits

2:00 p.m. – Poultry Show followed by Rabbit Show

2:00 p.m. – Shooting Sports Mini Shooting Range Activity

2:00 p.m. – Cloverbuds Activity

3:00 p.m. – Ambassador Green Cotton Candy

3:30 p.m. – Morris County Farm Bureau Activity

6:00 p.m. – Sheep Show followed by Meat Goat Show (Showmanship followed by Pee-Wee Showmanship, Costume Class at end)

MONDAY – August 1st

8:00 a.m. to 9:00 p.m. – Snack Shack Open (serving full menu; 7:30-9:00 p.m. will be a limited menu)

9:00 a.m. – Round Robin Showmanship

11:00 a.m. – Pictures of Saturday Afternoon and Sunday Winners

12:00 p.m. – Livestock Judging Contest

12:00 p.m. – Ambassador Cow Patty Bingo

2:45 p.m. – County-wide 4-H Group picture

3:00 p.m. – Barnyard Olympics

4:00 p.m. – Fairgrounds Clean Up

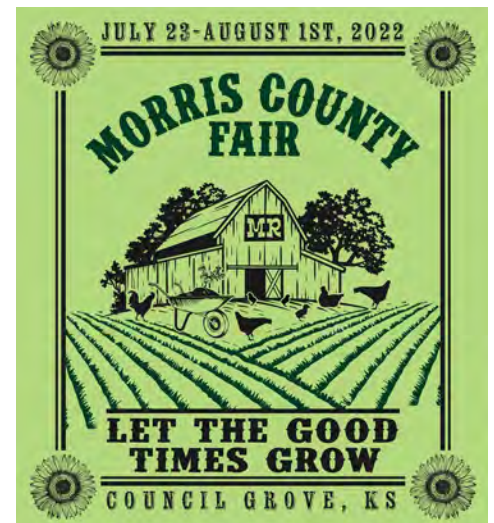
6:00 p.m. – Buyer Appreciation Meal (Last year's livestock buyers will receive a free meal ticket)

7:00 p.m. – Awards Presentation

7:30 p.m. – Livestock Sale (Cookie jars will be auctioned at this time.)

8:00 p.m. – Release of **INDOOR** Exhibits (4-H and Open Class)

ALL ANIMALS (including breeding animals, dairy, poultry, and rabbits) release following the completion of the livestock sale.



4-H HAPPENINGS

4-HERS ATTEND DAISY NATIONALS

Morris County Sharp Shooters Participate at National Daisy BB competition!

A group of seven Flint Hills District 4-Hers traveled to the Rogers, Arkansas to participate at the National Daisy BB competition held June 30-July 3. The team qualified for this competition on April 23 at the Kansas State Shooting Sports match held in Great Bend.

Team members, families, and coaches caravanned to the competition to support our team! Coaches traveling with the youth and volunteer as instructors for BB Gun with the Shooting Sports Program are: Clark Carroll, Clifford Carroll, and Dana Mayer. Team Members are: Castyn Andres, Cooper Andres, Zach Andres, Laramie Mayer, Lexi Todd, Cole Wilson, and Kasey Wilson.

Participants are required to complete a written test of 50 questions over the Daisy Curriculum and shoot from all 4 positions during the competitions. The 4 positions consist of prone, standing, sitting, and kneeling. Many members on the team set personal records at the event! Congratulations 4-Her's on a job well done!



NEW TO MEDICARE CHECKLIST

If you will be turning 65 soon, please refer to the New to Medicare Checklist as a guideline for making an appointment. You are welcome to make an appointment at any time to help get plan(s) determined.

4-6 Months before your month of eligibility:

Confirm your eligibility for Medicare benefits.

Contact the Social Security Administration

(Railroad retirees contact the Railroad Retirement Board)

Review your current health insurance to see what happens after you become eligible for Medicare

Contact your HR Department or current insurer

Find out what Medicare covers and the different options for coverage

Contact SHICK or attend a local New to Medicare or Medicare Basics program

3 months before your month of eligibility:

The following steps MAY not be necessary for everyone

Decide which Medicare option is best for you

Contact SHICK or attend a local New to Medicare or Medicare Basics program

Check with your doctor(s) to see if they accept the different types of Medicare coverage

Contact your providers and local hospitals

1-3 months before your month of eligibility:

The following steps MAY not be necessary for everyone

Enroll in Medicare A and B

Contact your local Social Security office or enroll online

If you are continuing work, enrolling in Part B may not be your best option

Enroll in a Medicare Supplement Plan OR a Medicare Advantage (MA) Plan

You only need one of these options. Do NOT enroll in both a Supplement and MA plan

Contact an insurance agent to enroll in a Supplement

Contact SHICK for assistance in choosing a MA plan

Enroll in a Part D Prescription Drug Plan

Enroll online or contact SHICK for assistance

If you are enrolled in a MA plan that includes drug coverage, do not enroll in a Part D plan

For more information, contact Shandi Andres at one of the Flint Hills Extension District offices
Council Grove—620-767-5136 | Cottonwood Falls—620-273-6491 | email sdandres@ksu.edu

Back to School Food Safety!

It's almost time for schools to gear up for the year! For families that pack lunch to go, here are some tips to remember:

- Wash your hands before prepping any food.
- Use ice packs or frozen juice boxes to keep cold foods cold in an insulated lunch tote.
- Rinse fruits and vegetables with water and blot dry with a paper towel.
- Remind kids to store their lunch in a refrigerator at school if available.

Learn more tips at www.fightbac.org/kidsfoodsafety/school-lunches/.



Have a great school year!
Photo: USDA Flickr

Tips on Vacuum Packaging Foods

Vacuum packaging food is a great way to preserve food that is refrigerated, frozen or dried for later use. It removes air from the package for a tight seal which reduces dehydration or freezer burn. Food can be portioned out for easy use later.

Here are some tips to remember about using vacuum packaging and to reduce risks from

Michigan State University Extension.

- Vacuum packaging is a method to package food. It does not replace canning. Foods requiring refrigeration or freezing must be stored this way. It does not prevent spoilage.
 - *Clostridium botulinum* can survive in vacuum packaged
- foods if present.
 - Vacuum packaged fish must be removed from the packaging before thawing.
 - Do not vacuum package raw onions, fresh garlic or fresh mushrooms.
 - Do not vacuum package liquids or baked goods.



Vacuum packaged meat
Photo: Canva.com

Looking Ahead:

KSU Beef Stock Field Day



Mark Thursday, September 29, 2022, on your calendar for the **KSU Beef Stocker Field Day** hosted at the KSU Beef Stocker Unit. The registration details and a complete schedule will be coming shortly. For more information, contact Dale Blasi (dblasi@ksu.edu)

ASI Family and Friends Reunion



Watch for more details coming soon on the 2022 **ASI Family and Friends Reunion**. New for this year, the event will change from a Friday event to Saturday, October 8. This year we will be honoring Dr. Dave Nichols with the Don L. Good Impact Award. Make plans now to attend.

TWO-SPOTTED SPIDER MITE

By: Chelsea Bartels, Ag Agent Flint Hills District

The dog days of summer are upon us and I have been noticing more and more pest's causing damage to plants. One in particular I have had some inquiries about is the Two-Spotted Spider Mite. This little pest is causing damage to numerous trees and we are seeing this damage now due to the hot temperatures we are having. The spider mites body color varies from a yellow to pale green, but is never reddish which is a similar mite called the carmine spider mite. The Two-Spotted Spider Mite usually has a dark spot on each side of the dorsal midline; hence the name.

The adult females overwinter and as the weather warms in the springtime, the female will begin to lay eggs. These mites are parthenogenesis (reproduction without fertilization). The newly hatched eggs to adulthood take about 10-14 days, in hot weather it can be as quick as 7 days and the adult female can live on average 30-60 days. There can be any where from 10-12 generations per year.

One way to see if you have spider mites in your trees is to hold a sheet of white paper beneath a branch and gently shake the branch. Mites will fall off the leaves onto the paper and be seen as tiny specks moving about. Mites normally feed on lower leaf surfaces and eat the epidermal cells of the leaf and withdraw cellular contents which causes the cells to collapse. The effect of this feeding appears as minute white dots or spots called "stipples". If you have a substantial mite issue then the feeding will cause yellowing/browning of leaves, and eventual leaf death. During feeding, some mite species may inject toxins that cause varying degrees of leaf discoloration and distortion.

Management: Spider mites seem to be a yearly issue in Kansas. Plants and small trees can be hosed down periodically with a strong spray of water which will dislodge mites. Be sure to get good coverage of the lower surface of the leaves and spray at least 2 times a week during the hot summer days. You can also use a horticultural oil and/or insecticidal soaps to moderate infestations. Both products help suppress all three life stages, but only the mites, immatures and eggs that are hit with the spray will be affected. Always make sure you get the under side of the leaves. The only negative part is that they are short-lived and retreatment may be necessary. Make sure you read the label for proper use on all horticultural oils and insecticidal soaps because some plants/trees may not be able to be sprayed with the products. If you have any questions on how to identify these pests please contact your local Extension Office.

References: *Two-Spotted Spider Mites, Kansas State University, K-State Research & Extension Publication*

Spider Mites on Trees and Shrubs, University of Maryland Extension



WHAT PRODUCERS SHOULD BE THINKING ABOUT IN AUGUST...

Tips by Dale Blasi, Extension Beef Specialist

August is when forages are maturing, weaning time is approaching, and weather dictates several key management decisions.

Breeding Season

- ◆ Given high feed price inputs, ruthlessly cull all unsound cows from the herd. Cull cows that do not conceive after three services by a fertile bull.
- ◆ Limit the breeding season. Remove bulls after 60 days with cows, 45 days with heifers.

These methods contribute to a more uniform calf crop, makes winter feed management easier, and increases the success rate of next year's breeding season.

Cow Herd Nutrition

- ◆ Provide ample amounts of clean, fresh drinking water.
- ◆ Conduct an inventory of forage needs for the winter feeding period.
- ◆ Plan ahead and price availability of byproducts, such as wheat-middling's, dried distillers grains, etc. prior to typical seasonal price increases.

Forage and Pasture Management

- ◆ Enhance grazing distribution with mineral mixture placement away from water sources.
- ◆ Observe pasture weed problems to aid in planning control methods needed next spring.
- ◆ Monitor grazing conditions and rotate pastures if possible and (or) practical.
- ◆ If pastures will run out in late summer, get ready to provide emergency feeds. Start supplemental feeding before pastures are gone to extend grazing.
- ◆ Harvest and store forages properly. Minimize waste by reducing spoilage.
- ◆ Sample harvested forages and have them analyzed for nitrate and nutrient composition.
- ◆ Plan for sufficient standing pasture for winter grazing needs.
- ◆ For stocker cattle and replacement heifers, supplement maturing grasses with an acceptable degradable intake protein/ionophore (feed additive) type supplement.

General Management

- ◆ Avoid unnecessary heat stress - Don't handle and/or truck cattle during the heat of the day.
- ◆ Repair, replace, and improve facilities needed for fall processing.
- ◆ Order supplies, vaccines, tags, and other products needed at weaning time.
- ◆ Consider earlier than normal weaning, but have a marketing plan in place.

Heard Health

- ◆ Consider revaccinating for the respiratory diseases in any animals that will be taken to livestock shows.
- ◆ Vaccinate suckling calves for IBR, BVD, PI3, BRSV, and possibly Pasteurella at least three weeks prior to weaning.
- ◆ Revaccinate all calves for blackleg.
- ◆ Vaccinate replacement heifers for brucellosis (4 to 10 months of age).
- ◆ Monitor and treat foot rot.
- ◆ If pinkeye is likely to be a problem, consider the following preventive and therapeutic measures.

Preventive:

- ⇒ Make sure the herd is receiving adequate vitamins and trace minerals in their diet.
- ⇒ Consider vaccination for pinkeye and IBR (consult your local veterinarian).
- ⇒ Control face flies.
- ⇒ Clip pastures with tall, coarse grasses that may irritate eyes.

Therapy:

- ⇒ Administer an intramuscular injection of long-acting oxytetracycline when symptoms are first noticed.
- ⇒ Shut out irritating sunlight by patching eyes, shade, etc.
- ⇒ Control flies.
- ⇒ Consult your veterinarian.

Upcoming Events

Central Kansas

Soil Health Bus Tour

August 1-2 Salina

August 1 Tour Stops

Saline County Forage Systems Demonstration Plot - Salina
The Land Institute Tour - Salina
Bret Keeler Farm - Mentor
Kelly & Chris Novak Farm - Tampa
Tiffany Cattle Company - Herington

August 1 Dinner, Drinks, and Discussions - Hilton Garden Inn

August 2 Tour Stops

Ryan Speer Farm - Sedgwick
CJ & Russell Blew Farm - Castleton
Kauffmann Seeds & Lance Gunderson of Regen Ag Lab - Yoder
Austin Schweitzer Farm - Sterling
Exapta Solutions Tour - McPherson

\$25 per tour day, \$15 for dinner, bundle all three for \$55

Departing and returning each day from Hilton Garden Inn, Salina, KS

Learn more and register at:

<https://kssoilhealth.org/event/central-kansas-soil-health-bus-tour/>



Visit the website for additional details!

As a note, you can attend either or both days.

A charter bus that is equipped with air conditioning and restrooms will be used!

The Hilton Garden Inn block rooms are not available anymore, so additional accommodations would need to be secured. But, tour spots are still available!

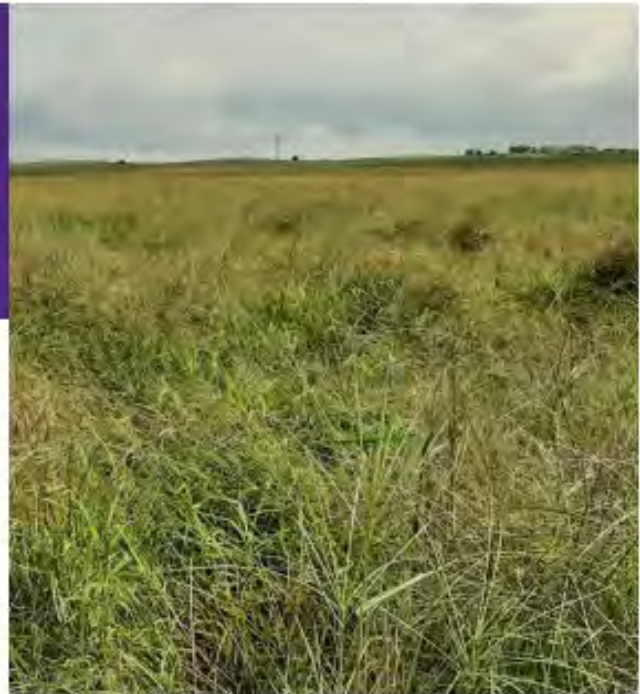
Upcoming Events

Central Kansas Warm Season Forage Field Day

Thursday, Aug. 18, 2022
Donuts at 8AM - Tours at 8:30AM

Saline Co. Conservation District Farm
3421 E. Water Well Rd., Salina, KS

From I-135: Take exit 88 and go 4 mi. east on Water Well Rd. Watch for event signage.



FREE TO ATTEND - - - - - NO RSVP NEEDED

Tour demonstration plots consisting of Hybrid Pearl Millet, Teff, Crabgrass, and Photoperiod Sensitive BMR Sorghum-Sudangrass.

Visit about *Sericea lespedeza* – identification, concerns and control.

See results of an Old World Bluestem trial using five different herbicide treatments.

Featured Presenters

- Mike Henry – Saline County Rancher & Plot Cooperator
- Trent Page – Sales Manager, Star Seed
- Jay Wisbey – Crop Production Agent, Central Kansas Extension District
- Cade Rensink – Director, Central Kansas Extension District



Kansas State University is committed to making its services, activities and programs accessible to all participants. If you have special requirements due to a physical, vision, or hearing disability, contact Cade Rensink, District Director, at 785-309-5850 or cmr@ksu.edu.
Kansas State University Agricultural Experiment Station and Cooperative Extension Service
K-State Research and Extension is an equal opportunity provider and employer.

Upcoming Events

Kansas Fence Law Seminar

Who: Roger McEowen, Washburn University School of Law, KSU Ag Econ

What: Seminar on Kansas Fence Law

When: Tuesday, August 23, 2022, 7:00 p.m.

Where: Geary County 4-H/Sr. Citizens Building,
1025 S Spring Valley Rd, Junction City, KS

Why: Good fences make good neighbors is the old saying we've all heard. The challenge is that there are many things that property owners need to be aware of when it comes to fences and fence laws. Roger McEowen, Washburn University School of Law, KSU Ag Econ and noted agricultural law specialist will present an informative program on Kansas fence law. Topics to be addressed include basics of the Kansas fence law statutes; partition fences; locating, building and maintaining legal fences; handling fence disputes; highway fences; adverse possession and other regularly encountered fence law questions. There is no charge for the program but registrations are encouraged by contacting the Geary County Extension Office, 785-238-4161 or emailing Geary County Extension Agent, Chuck Otte, cotte@ksu.edu.

K-State Research and Extension is committed to providing equal opportunity for participation in all programs, services and activities. Accommodations for persons with disabilities may be requested by contacting the event contact, Chuck Otte, two weeks prior to the start of the event August 9, 2022 at 785-238-4161, cotte@ksu.edu. Requests received after this date will be honored when it is feasible to do so.

Kansas State University Agricultural Experiment Station and Cooperative Extension Service

K-State Research and Extension is an equal opportunity provider and employer.

KANSAS Climate Smart Initiative



KANSAS FARMERS,

The Kansas Association of Conservation Districts (KACD) is the recipient of a grant in partnership with ADM and others that will support implementation of cover crops on 100,000+ acres across Kansas. Farmers that are new OR are veterans to using cover crops in their operation are eligible for this assistance of \$10 per acre.

Are you ready to enhance soil health, reduce atmospheric greenhouse gases, improve water resources, support wildlife, and receive economic benefits? Contact your local conservation district office at 620-767-5111 ext 101 or tisha.richardson@ks.nacdnet.net for more information about this new opportunity!

USDA is an equal opportunity provider, employer, and lender.

***Improve long-term profitability through
reduced input costs & higher yields.***



Kansas Climate Smart Initiative

In partnership with [ADM](#) and the U.S. Department of Agriculture's Natural Resources Conservation Service ([NRCS](#)), the National Fish and Wildlife Foundation (NFWF) today recently announced the Kansas Association of Conservation Districts (KACD) as a recipient of a grant to help farmers plant cover crops across Kansas. Awarded under NFWF's Midwest Cover Crop Initiative, this grant will support implementation of this beneficial agricultural practice on 100,000+ acres. Kansas conservation districts will assist with implementation. Conservation districts will be taking applications for farmers to receive \$10 per acre for planting cover crops on their farm. This program is eligible for farmers new to planting covers and those that are veterans to using cover crops in their crop rotations.

Farmers who implement cover-crop systems may see improvements in long-term profitability through reduced input costs and higher yields. By accelerating the adoption of this practice, this grant will help enhance soil health, reduce atmospheric greenhouse gases, improve water resources, and support wildlife while providing economic benefits to participating farmers.

For more information about this new opportunity please contact your local conservation district office.

Tisha Conard Richardson, Morris County: (620) 767-5111, Ext. 101

Mallory Burton, Lyon/Chase County: (620) 343-2812, Ext. 3

Extra Goodies

Would you like to receive more focused information about poultry or insects?

Sign up for the KSU Poultry Newsletter or the Kansas Insects Newsletter!

To sign up for the KSU Poultry Newsletter, you can send an email to lschrein@ksu.edu. If you would like to view previous poultry newsletters, you can visit www.asi.ksu.edu/poultrynewsletter.

To subscribe for the Kansas Insect Newsletter, you can send an email to listserv@listserv.ksu.edu. In the text of the email, include “sub extbugsnewsletter” (without the quotation marks). The best option is to remove all other text, including any email signatures.

K-STATE
Research and Extension



Flint Hills
District

Flint Hills Extension District

Cottonwood Falls Office

PO Box 100
205 Broadway
Cottonwood Falls, KS 66845

Council Grove Office

501 W Main
Council Grove, KS 66846